



Annual SMC Bike and Ped Count

Gwen Buckley



OFFICE OF
SUSTAINABILITY
COUNTY OF SAN MATEO

Overview

San Mateo County is participating in the [National Bicycle and Pedestrian Documentation Project](#) from September 11th – 16th, 2018.

This nationwide effort follows a standardized protocol. The resulting data can be used:

- By planners
- By decision-makers
- To guide investment decisions around sustainable transportation



Overview

Volunteers count at various locations throughout San Mateo County during specific time periods.

We select count sites based on locations from last year and recommendations from the community.

- Same count method is used for all intersections

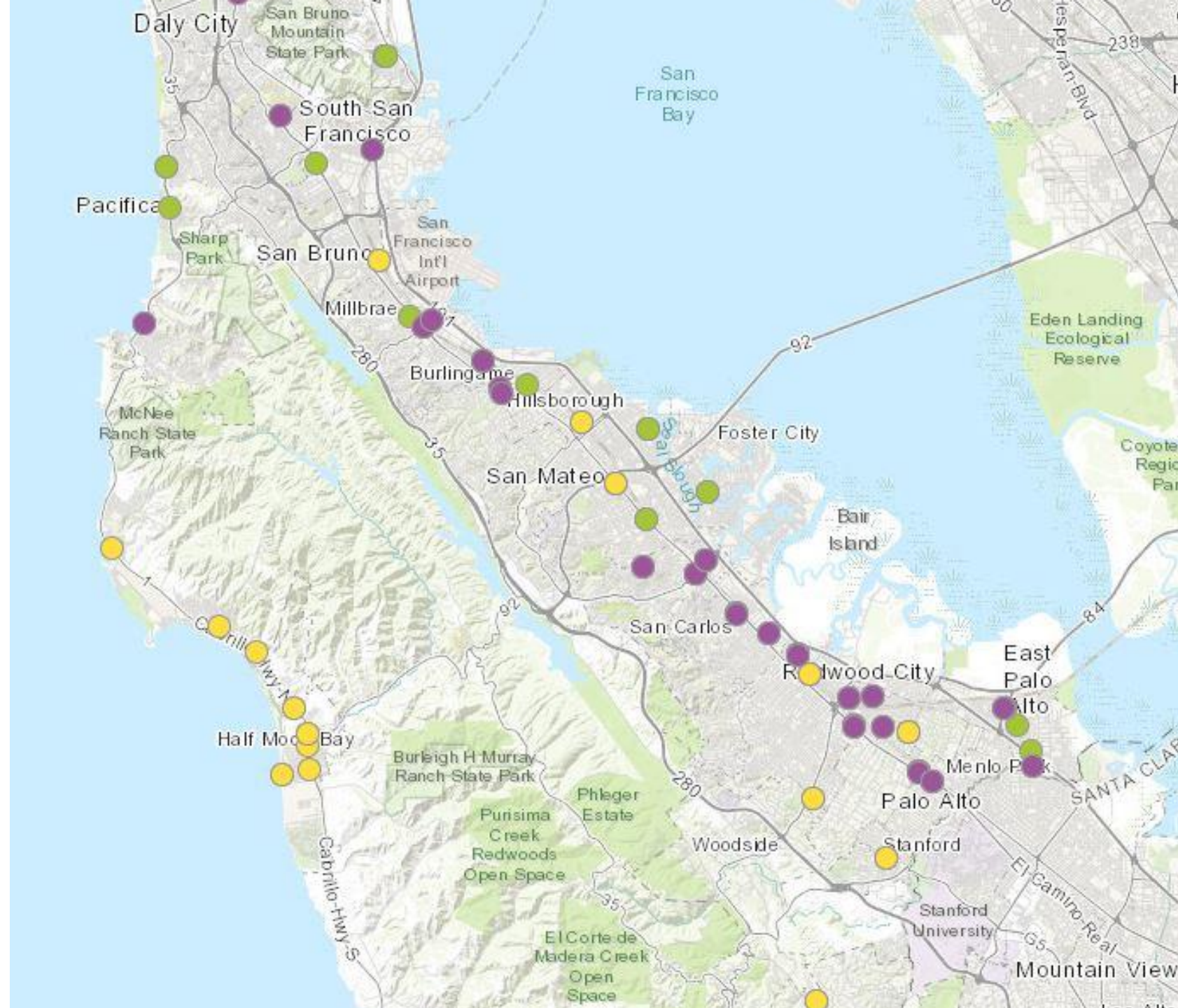


Count Locations

Count locations in **purple** were counted in **2016 and 2017**.

Count locations in **yellow** are new locations in **2017**.

Counts in **green** are **2016 only**.



Pedestrian Counts

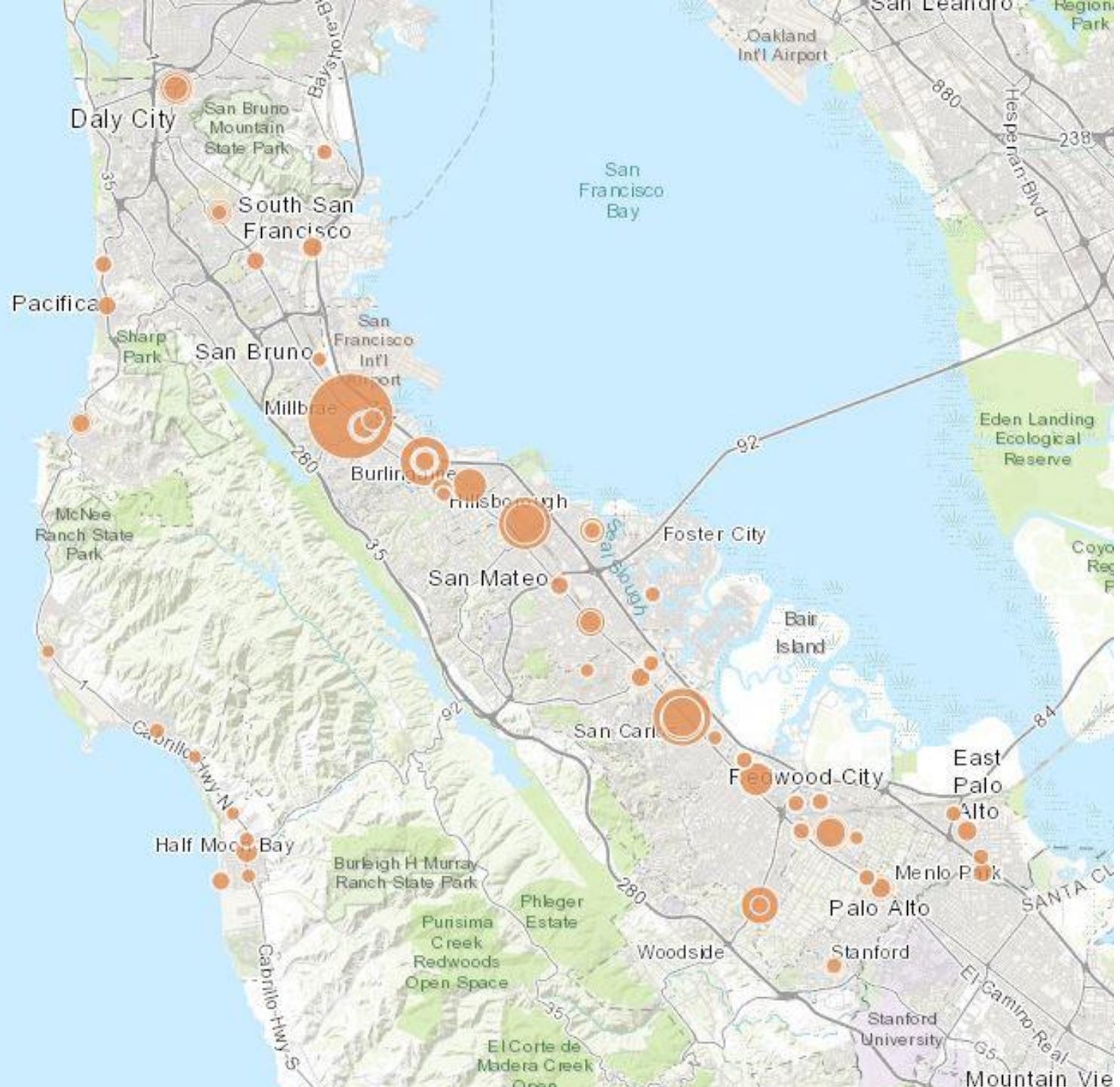
Legend

Total Pedestrians per Count (2017 and 2016)

Pedestrian



Click on each count location for more information!



Bicycle Counts

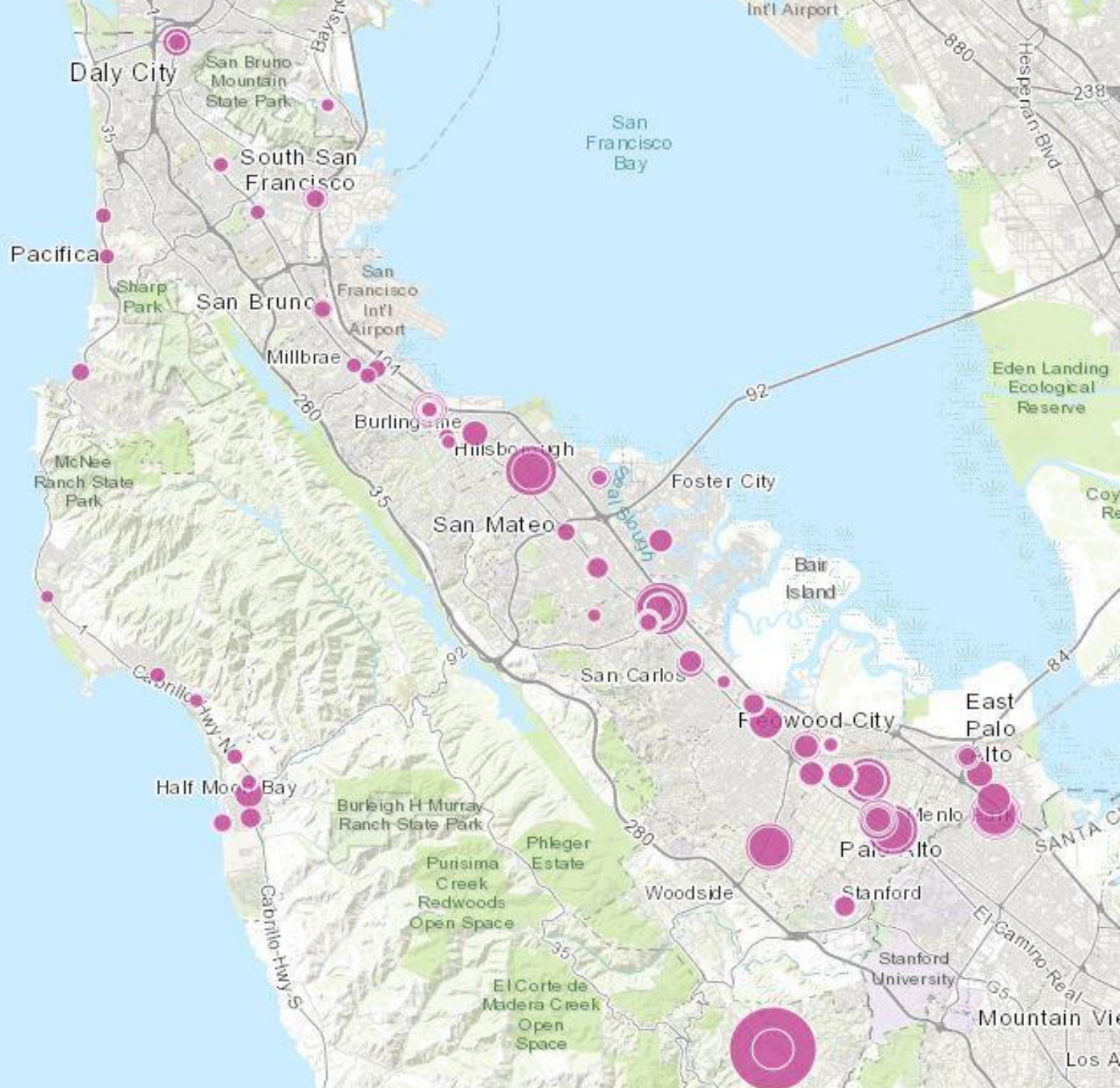
Legend

Total Bicycles per Count (2017 and 2016)

Bikes



Click on each count location for more information!



VOLUNTEERS NEEDED

FOR THE ANNUAL SAN MATEO COUNTY BIKE & PEDESTRIAN COUNT
September 11th – 16th, 2018

Can YOU help?



For more information visit smcsustainability.org/livable-communities/active-transportation/

Please direct all questions to bikepedcountsmc@gmail.com
OR call (650) 599-1420.



OFFICE OF
SUSTAINABILITY
COUNTY OF SAN MATEO