

COUNTY OF SAN MATEO



**Department of Public Works
BPAC Meeting
Santa Cruz/Alameda de las Pulgas
Complete Streets Project Design
Modifications Update**

**Carter Choi
Principal Civil Engineer
Department of Public Works
Engineering and Construction**

August 15, 2024



Agenda

- ❖ Santa Cruz Avenue/Alameda de las Pulgas Complete Street Project
- ❖ Questions



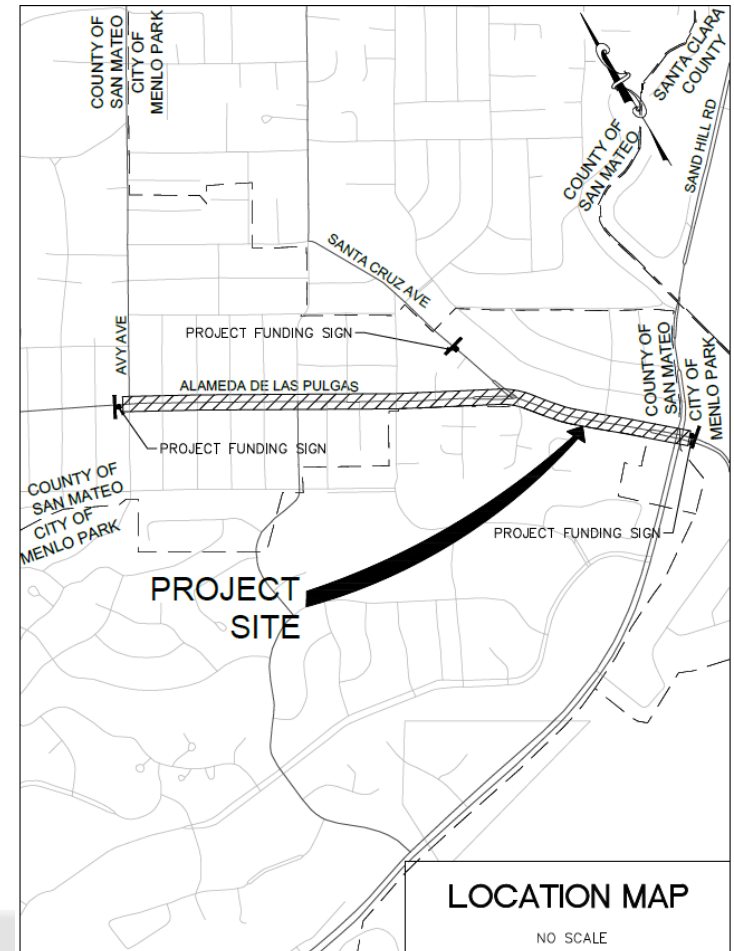
Santa Cruz Ave/Alameda de las Pulgas Complete Street Project

Location

Santa Cruz Avenue and Alameda de las Pulgas from Avy Avenue to Sand Hill Road

About the Project

Santa Cruz Ave/Alameda de las Pulgas Complete Street Project includes sidewalk widen, concrete island, bulb-outs, curbs ramp, signal light modifications and updated pedestrian crossing.



Santa Cruz Ave/Alameda de las Pulgas Complete Street Project

Previous Public Outreach meetings

- ❖ 3 Community meetings over the last several years
 - ❖ August 28, 2017, January 30, 2020, April 18, 2023

October 20, 2020 the Board of Supervisors approved the Preferred Alternative Plan and the Project

- ❖ 19 Task Force Committee Meetings

April 21, 2024 Residents meeting

- ❖ Several issues were brought up for discussion
- ❖ Issues were presented to Supervisor Mueller and the County Executive Officer
- ❖ DPW received these issues for review and further evaluation

Project Timeline

- ❖ Adoption of Plans & Specification - April 23, 2024
- ❖ Advertise and Bidding finished June 2024
- ❖ Anticipated Construction Start Date – September 2024
 - ❖ Contractor – RK Engineering, Inc.
- ❖ Estimated Construction Duration of 12 months



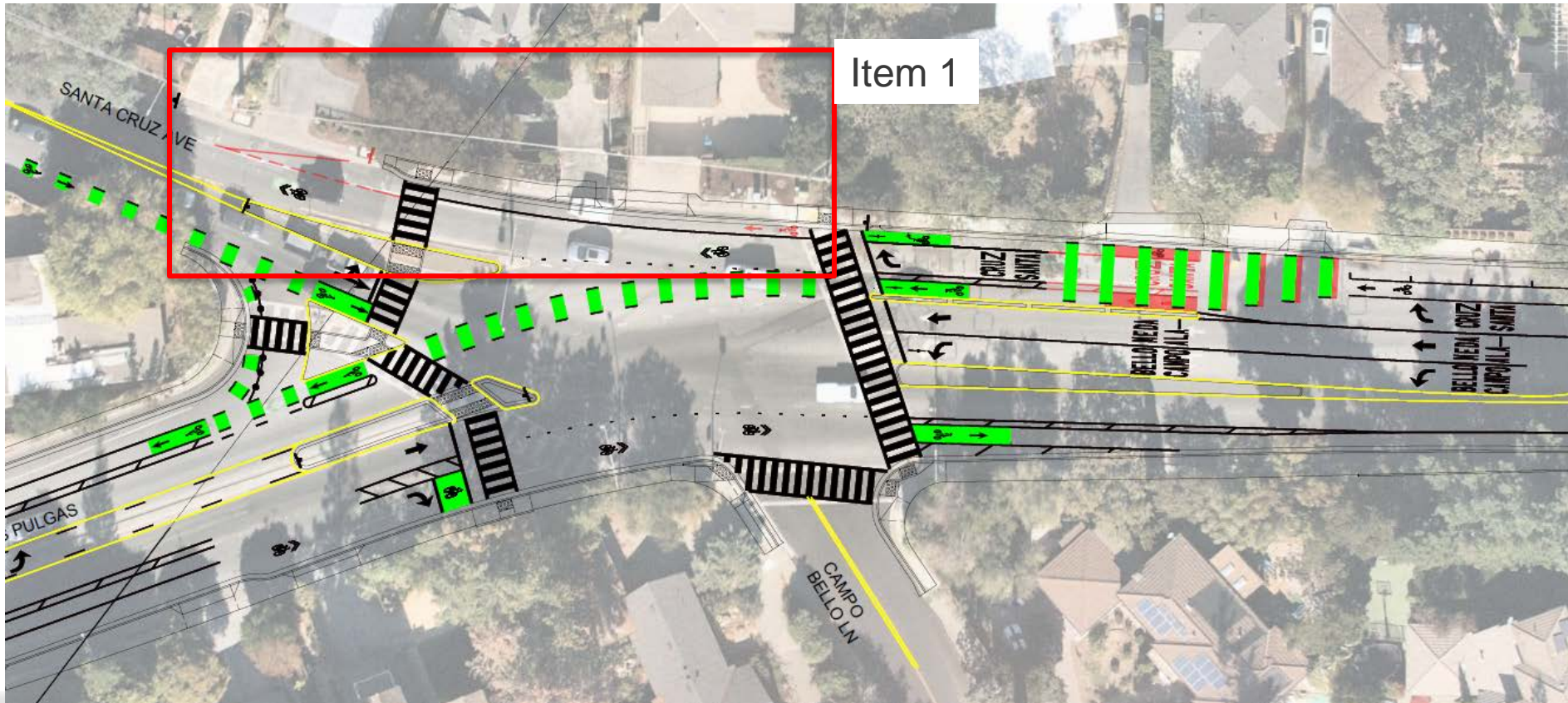
Santa Cruz Ave/Alameda de las Pulgas Complete Street Project

Discussion with Community Members in April 2024

- ❖ Request Item 1: Removal of the bike lane adjacent to the curb/ sidewalk (2095-2099 Santa Cruz Ave) and installing a fog line (4" white line) as currently existing. Installation of sharrow through the intersection north bound on Santa Cruz Ave.
- ❖ County Response: The fog line stripe will be placed 5' from the new curb through the intersection, as the sidewalk is being widened in this location, so the new shoulder width will be less than currently exists (i.e., it will be 5' wide now)

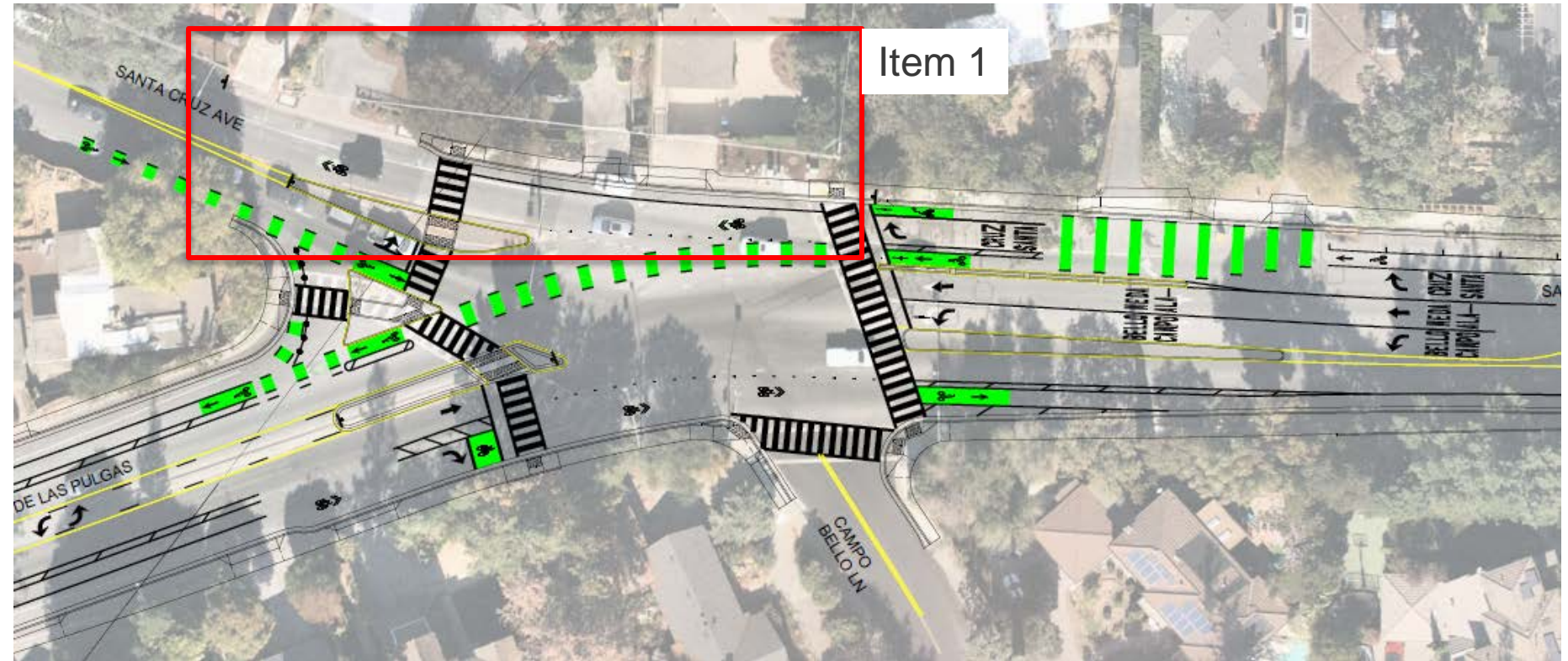
Santa Cruz Ave/Alameda de las Pulgas Complete Street Project

- Prior Design (in Red)



Santa Cruz Ave/Alameda de las Pulgas Complete Street Project

- Proposed Design



Santa Cruz Ave/Alameda de las Pulgas Complete Street Project

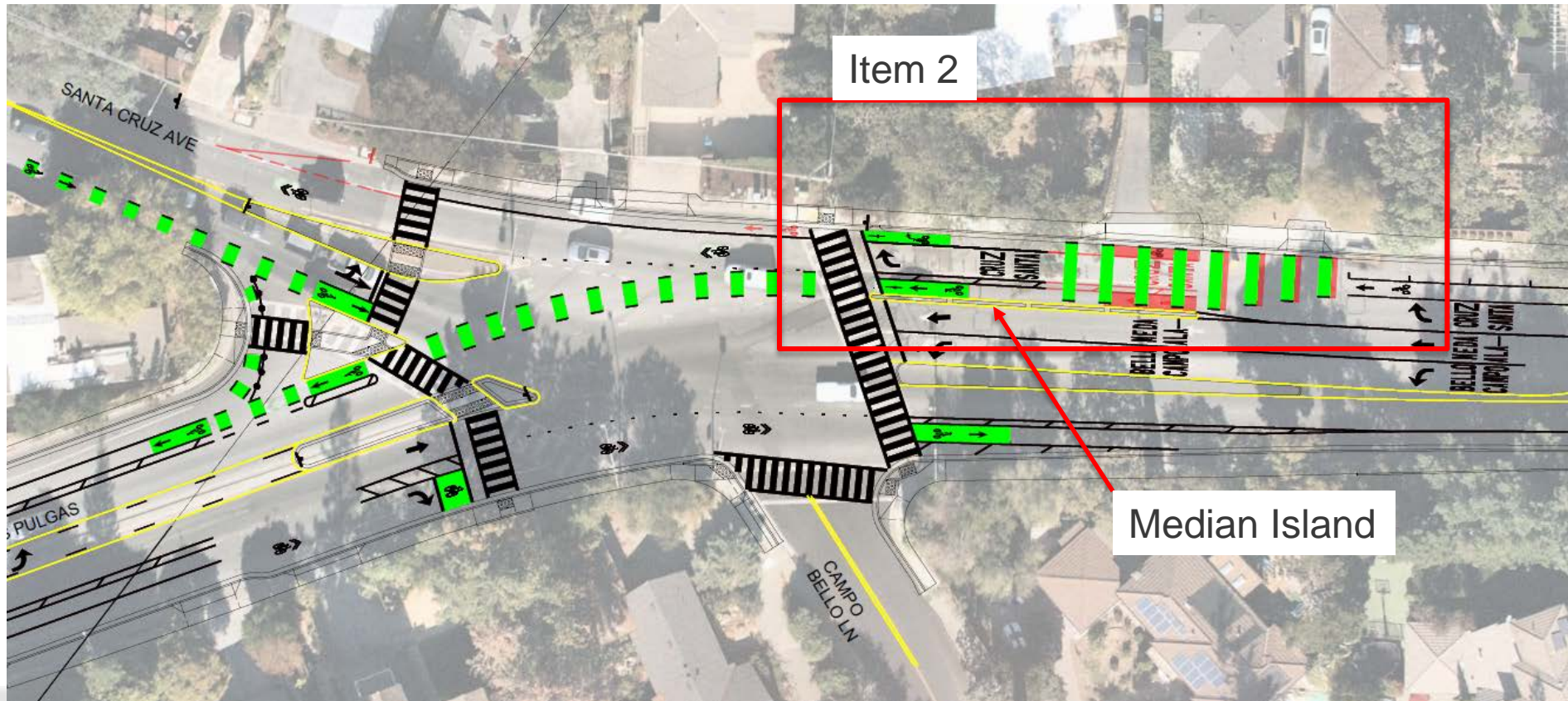
Discussion with Community Members in April 2024

- ❖ Request Item 2: DPW will evaluate the bike lane median on Santa Cruz Avenue and determine potential alternatives. 1) Adding a second barrier to protect the bicyclist on both sides, 2) removing the raised median and placing paint instead, and 3) removing barrier and incorporate community alternative for bike striping.

- ❖ County Response:
 - ❖ 1) The addition of a second barrier at this location would impact the ability for residents living across the street to the north from backing out of their driveways and therefore it is not being considered for inclusion in the Project.
 - ❖ 2) The raised median between the through lane and the bike lane was included to prevent vehicles from making last minute lane changes at the Y intersection, which provides additional protection for cyclists from these types of vehicular movements. In addition, this was a feature included in the final preferred alternative selected by the community.
 - ❖ 3) The response for 2 above is also relevant to this item. In addition, significant changes to striping at the Y-intersection such as this, would require extensive redesign and potentially impact median designs and striping on other legs of the intersection.
 - ❖ DPW engaged with a local bicyclist and BPAC member on this issue to seek input, which was that the median as designed will not be an issue for bicyclists to navigate the intersection and believe it will prevent the last-minute turns or lane changes from vehicles as was previously identified to be an issue at the intersection.
 - ❖ Minor changes to the approach to the intersection.

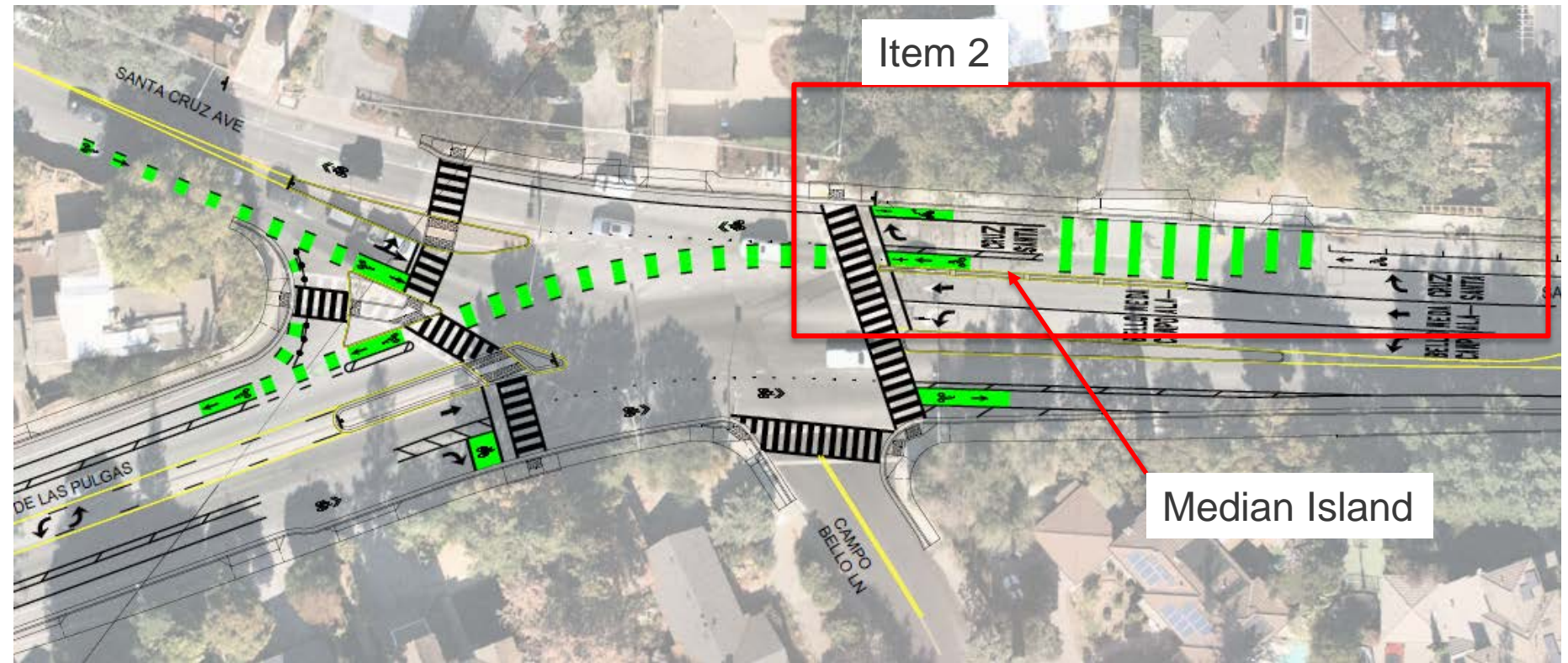
Santa Cruz Ave/Alameda de las Pulgas Complete Street Project

- Prior Design (in Red)



Santa Cruz Ave/Alameda de las Pulgas Complete Street Project

- Proposed Design



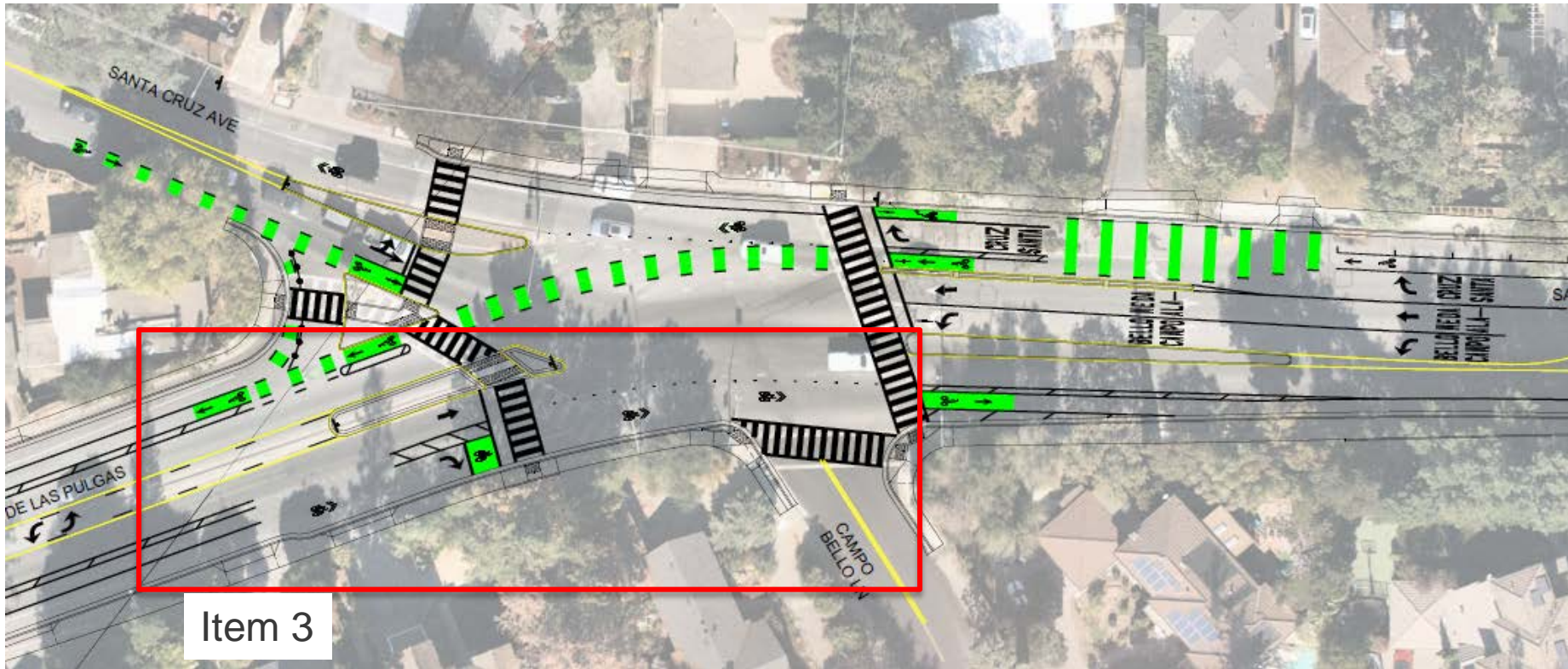
Santa Cruz Ave/Alameda de las Pulgas Complete Street Project

Discussion with Community Members in April 2024

- ❖ Request Item 3: Review the need for the right turn pocket as southbound vehicles on Alameda de las Pulgas approach Campo Bello Lane. Explore removing the pocket right turn lane and installing a bike lane in lieu of sharrows through the intersection.
- ❖ County Response: This alternative was reviewed and considered during the design process. It was rejected due to concerns about bicyclist safety.

Santa Cruz Ave/Alameda de las Pulgas Complete Street Project

- Proposed Design



Item 3

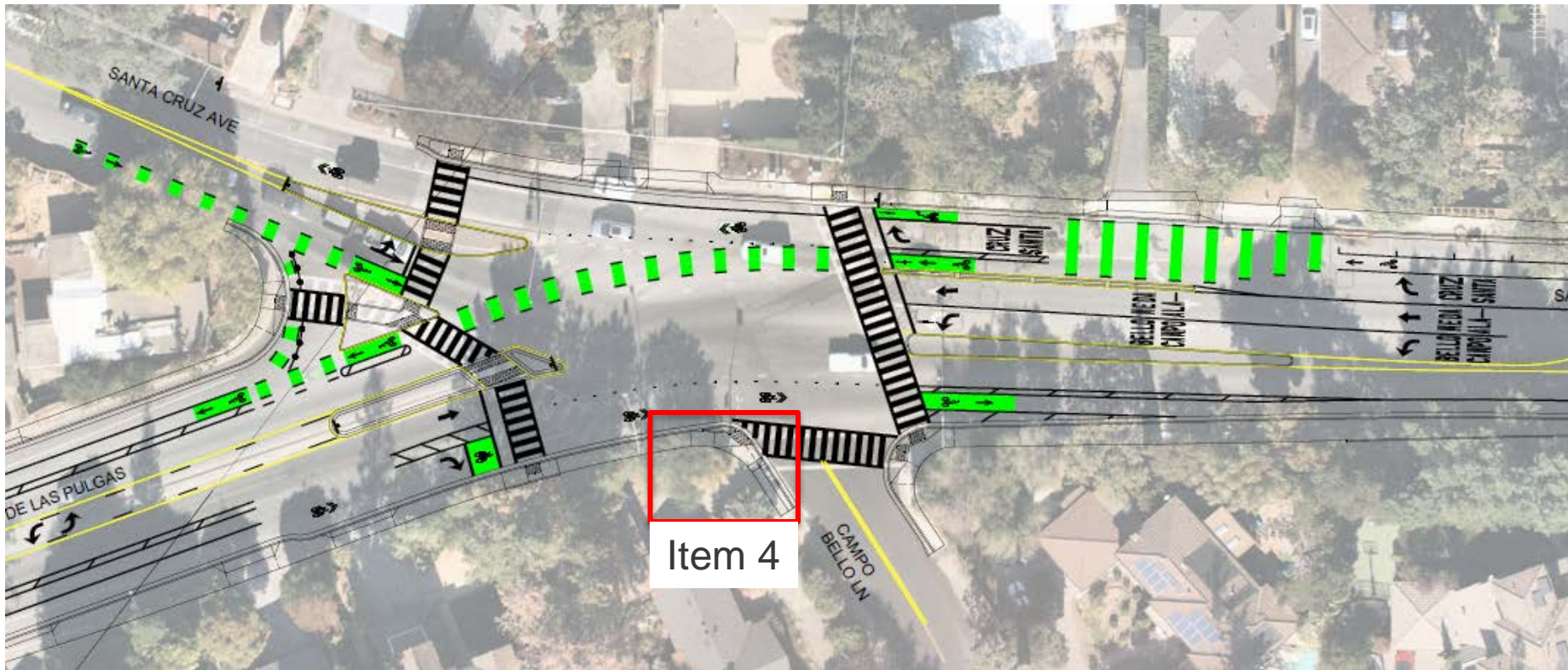
Santa Cruz Ave/Alameda de las Pulgas Complete Street Project

Discussion with Community Members in April 2024

- ❖ Request Item 4: Ensure that the traffic signal pole location at Campo Bello Lane has ADA clearance.
- ❖ County Response: Design team confirmed there is sufficient ADA clearance to the signal pole. Minor changes in sidewalk grades were made to maximize the sidewalk clearance to the pole.

Santa Cruz Ave/Alameda de las Pulgas Complete Street Project

- Proposed Design



Santa Cruz Ave/Alameda de las Pulgas Complete Street Project

Additional Inquiry from Community Members in May 2024

- ❖ Lane widths: One of the results of the Santa Cruz/Alameda Safety Task force was an agreement to have traffic lane widths, including the center two-way turn lane be 10' widths. The two main reasons were for traffic calming (speed) and to provide for bike lane improvements, including the bike lane's 2' buffer. Discussion with County DPW showed that the reduced lane widths and the road diet, provided the right of way room needed to have buffered bike lanes and the wider ADA compliant sidewalks throughout the majority of length of the corridor.
- ❖ County Response: The recommendations from the task force were to "Restripe travel lanes to be 10 feet wide and the center two-way left-turn lane to be 11 feet". This includes the segment on Santa Cruz Avenue between Sand Hill Road and the Y Intersection and on Alameda de las Puglas between the Y Intersection and Avy Avenue.
 - ❖ In addition, DPW will modify the lane widths from the plans to make sure they are 10' travel lanes with 11' center turn pocket where feasible and where there is sufficient roadway width and right of way.

Questions

- Opportunity to provide input and comments
- Send comments to
DPW_santacruzalameda@smcgov.org





QUESTIONS?

