



OFFICE OF
SUSTAINABILITY
COUNTY OF SAN MATEO

RICAPS Monthly Meeting

December 12, 2023

RICAPS technical assistance is available through the San Mateo County Energy Watch program, which is funded by California utility customers, administered by Pacific Gas and Electric Company (PG&E) under the auspices of the California Public Utilities Commission and additional funding provided by Peninsula Clean Energy.



Agenda

1:15-1:25: Welcome and Announcements



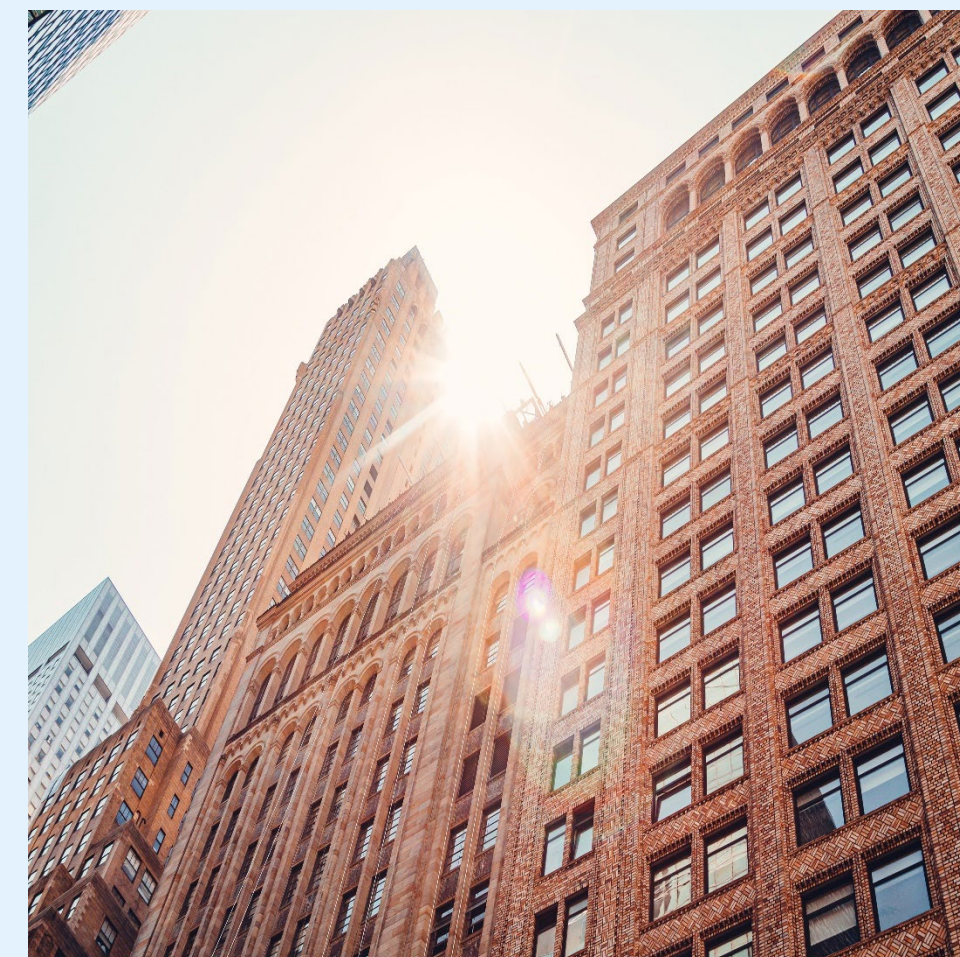
- 1:15-1:20: Welcome, Avana Andrade
- 1:20-1:25: Announcements



1:25-2:00: RICAPS Implementation Highlights



- 1:25-1:50: Compost & Edible Food Recovery Program Update- County Office of Sustainability, Jack Steinmann & Lizzie Carrade
- 1:50-2:00: Energy Watch Facility Electrification Highlight, Laura Wong, Office of Sustainability



2:00-3:00: Group Discussion: 2023 Recap & RICAPS Planning for 2024



- Part 1: 2023 Sustainability Action and Highlights
- Part 2: What we're hoping to see from RICAPS in 2024



1: Announcements

Call for First Movers: Municipal Electric First Policy + Staff Report



Goal: Pass municipal policy with exemption option for municipal facility upgrades and new construction to be all-electric

View draft language here [staff report upcoming]:

<https://drive.google.com/file/d/1e-Z7sML1xZKwEwyvNfiFT-WtCDL7A4zY/view?usp=sharing>

- Accompanying staff report can help City Staff move through the City Council adoption phase
- Ongoing Rincon technical support available for Cities to move through process
- *Ask- first mover cities to move through this process*
- *Next steps: incorporate into CAAP updates; set up meetings with electeds/ public works to pitch*

POLICY:

All new construction and major renovation of City-owned facilities shall comply with the applicable policy requirements according to project type and size. This Policy is intended to supplement, not replace, any other applicable building requirements, including those in the City Name Building Code.

1. New Construction:

All new, City-owned buildings and other infrastructure shall be constructed to comply with the following requirements:

- a. The project shall be constructed to be all-electric.
- b. Incorporate on-site renewable energy systems to the extent feasible and consider inclusion of batteries for energy storage; and
- c. Consider the life-cycle costs of the building design

2. Renovations:

Any building system upgrades and/or renovations of City owned buildings shall comply with the following requirements:

- a. All new building renovations will be all-electric.
- b. Building upgrades to electric infrastructure, building structure, or other systems shall consider future electrification needs including panel capacity, space for larger heat pump systems, or larger footprint rooftop package units.

Exceptions:

Exceptions to the electrification requirements above can be made under the following circumstances:

- a. Council determines that all-electric construction is infeasible or prohibitively expensive.

Examples of projects that may be considered for exceptions include, but are not limited to:

- (1) Technology is not available for the specific end use needed in the building AND no alternative processes can be identified;



An aerial photograph of a wetland or marsh area, showing a complex network of winding water channels and shallow ponds. The water is a deep blue, while the surrounding land is a lighter, muddy brown. The overall scene is a vast, flat landscape with intricate patterns of water and land.

2: Edible Food Recovery and Compost Program in Review- County Office of Sustainability



OFFICE OF
SUSTAINABILITY

COUNTY OF SAN MATEO

SB 1383 Compost Broker Program



Overview

1. Resource Conservation District Compost Broker Program Update
2. Q&A
 1. San Mateo County Edible Food Recovery Program
 1. Q&A



Jurisdiction	Number of Truck Loads of Compost
County Total	1788.9
County of San Mateo	164.0
Atherton	16.0
Belmont	61.4
Brisbane	10.6
Burlingame	69.0
Colma	3.8
Daly City	251.9
East Palo Alto	70.4
Foster City	76.2
Half Moon Bay	28.6
Hillsborough	26.4
Menlo Park	80.8
Millbrae	52.2
Pacifica	87.9
Portola Valley	10.6
Redwood City	197.6
San Bruno	104.3
San Carlos	69.2
San Mateo	239.1
South San Francisco	155.8
Woodside	13.1

Where We Left Off



Where We Left Off



Where We Left Off



Sign Up



- Find farmers interested and willing to participate
- Evaluate if the farmer is eligible for other funding opportunities and support farmer through that process
- Sign all necessary agreements we need for SB 1383 (this takes time and trust with farmers who are often very hesitant to sign agreements)
- Leveraging approximately \$200K since the fall of 2022.

Soil Sampling and Application Planning



- It is important to know where farmers are starting from to determine appropriate application rates
- Soil probe.
- Darker layer is where all of the organic matter is. Where all the life is and where the carbon is.
- When compost is applied it essentially facilitates the expansion of the living layer of the soil.

Compost Delivery



Compost Spreading



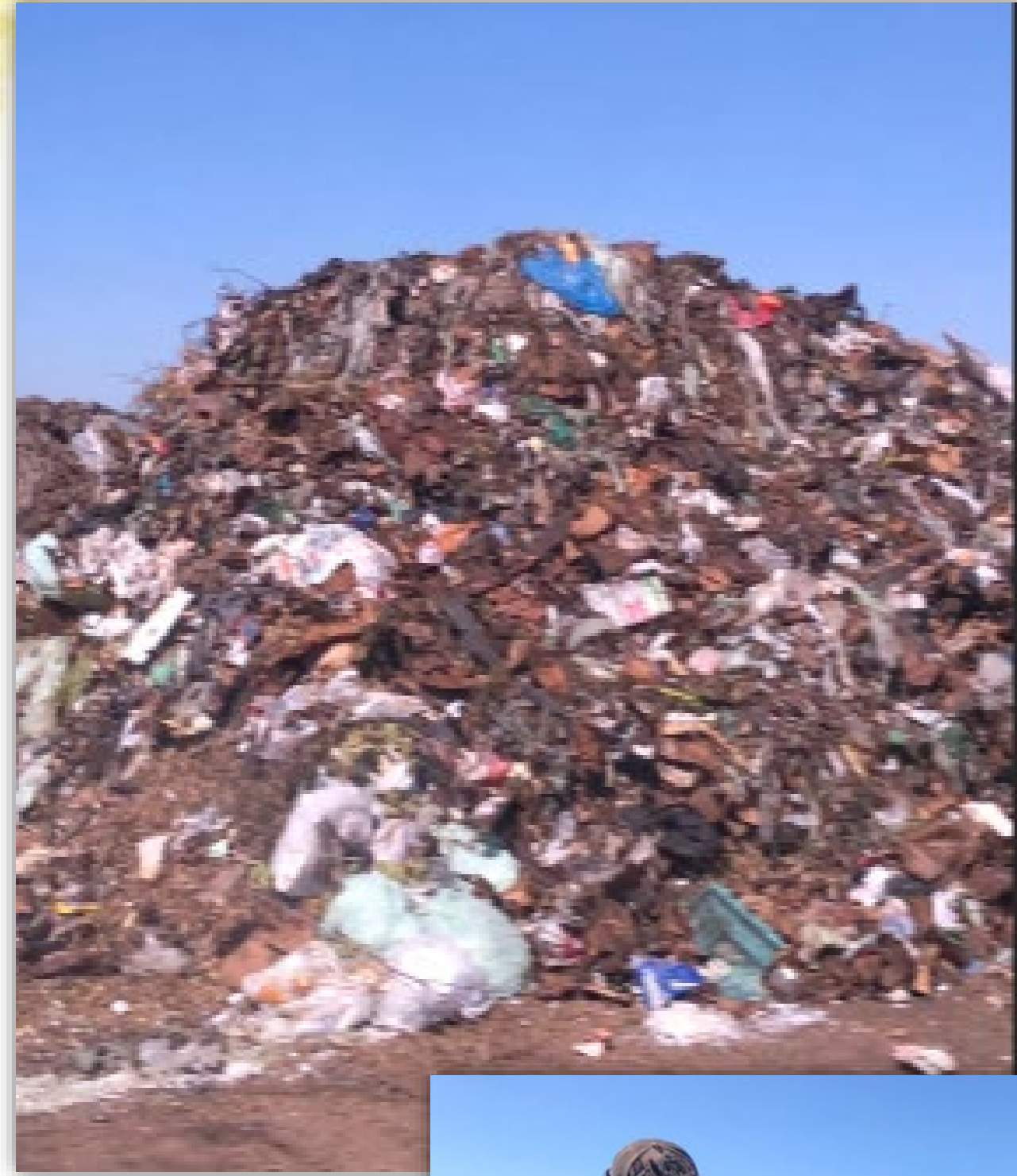
Compost Spreading



Compost Spreading



Challenge and Opportunities



Next Steps



1. Extend Program for another 2 years
2. Adjust program to allow greater flexibility
1. Advocate for procurement changes
2. Plan for future without grant funding to fuel this work



Questions?

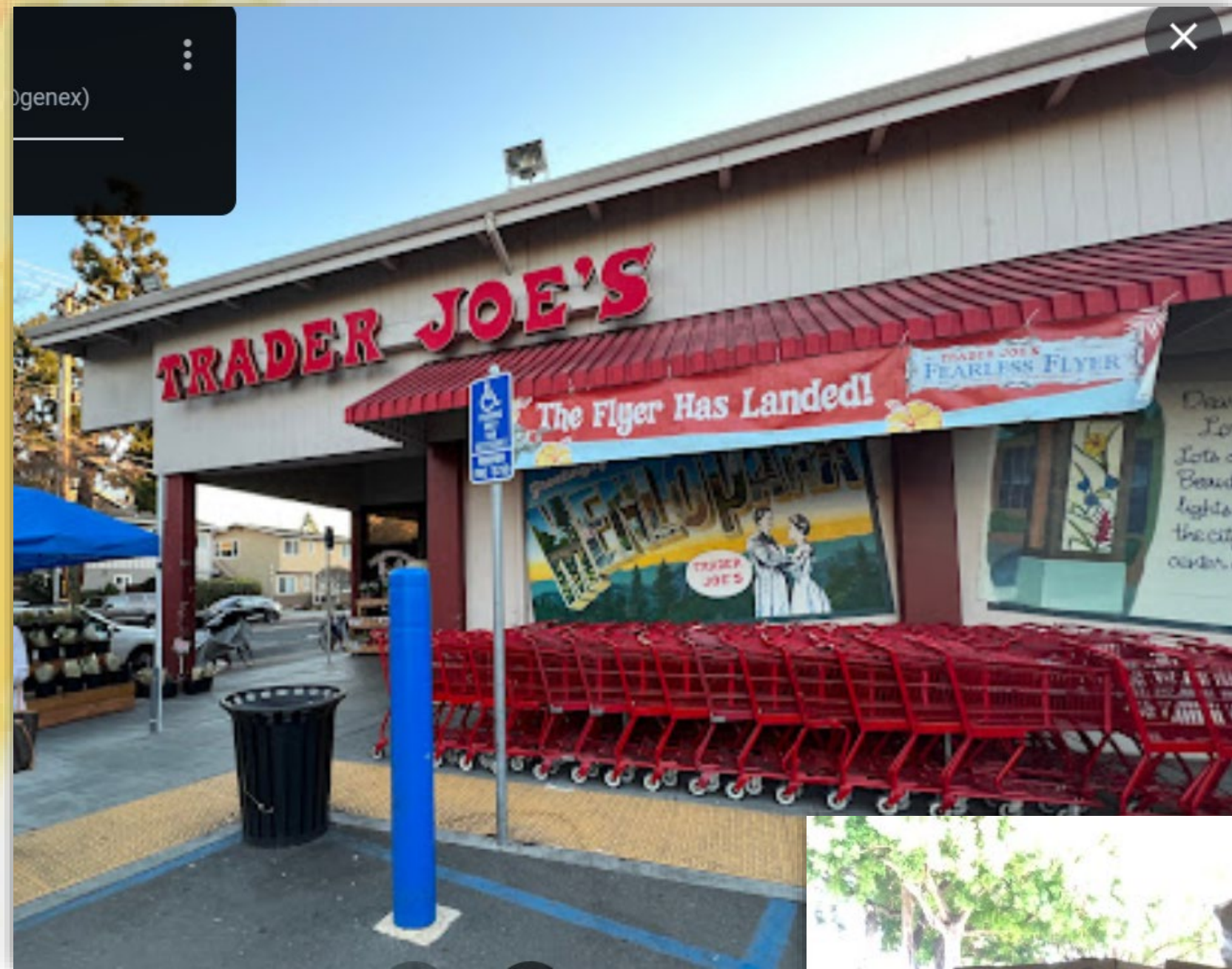


OFFICE OF
SUSTAINABILITY

COUNTY OF SAN MATEO



San Mateo County Edible Food Recovery Program



SB 1383 and Edible Food Recovery

Tier 1

January 1, 2022

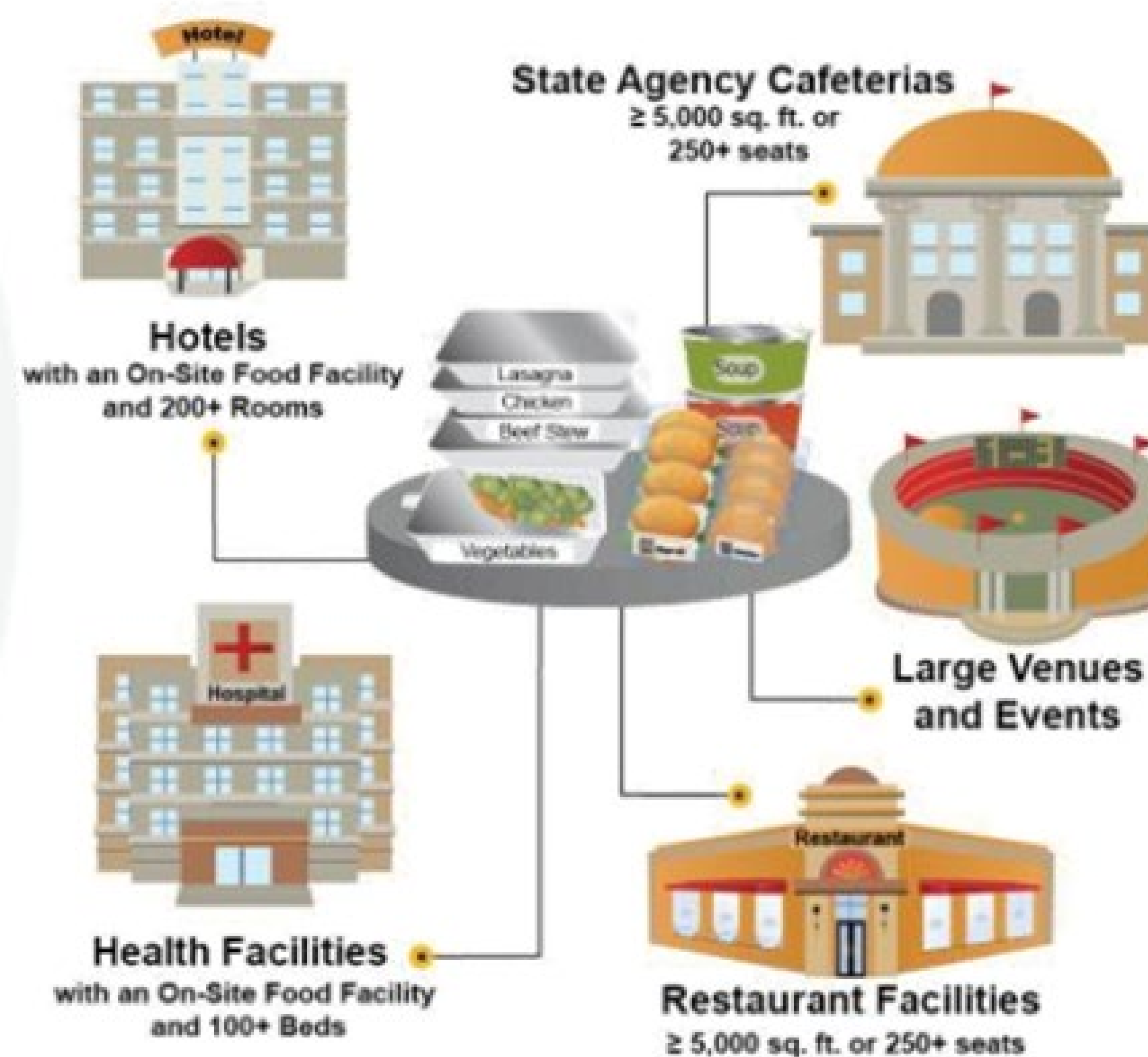
Tier one businesses typically have more produce, fresh grocery, and shelf-stable foods to donate.



Tier 2

January 1, 2024

Tier two businesses typically have more prepared foods to donate, which often require more careful handling to meet food safety requirements (e.g. time and temperature controls).



Jurisdiction Edible Food Recovery Requirements

Establish Edible Food Recovery Program



Plan for Capacity and Expansion (if needed)



Enforceable Mechanisms and Monitor Compliance



Ensure Generators Have Access to Organizations/ Services



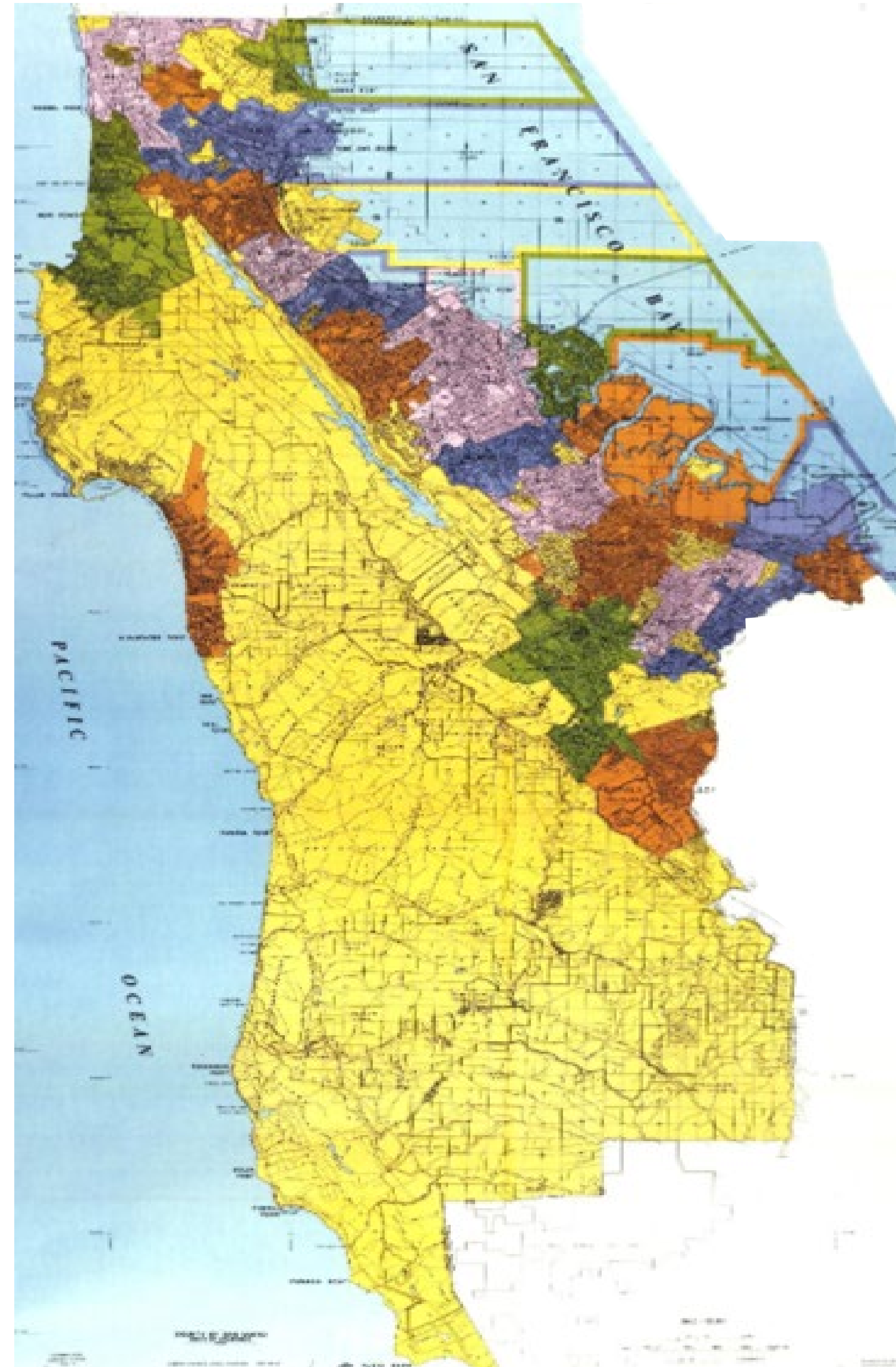
Provide Education



Report Program Information



One Countywide Program

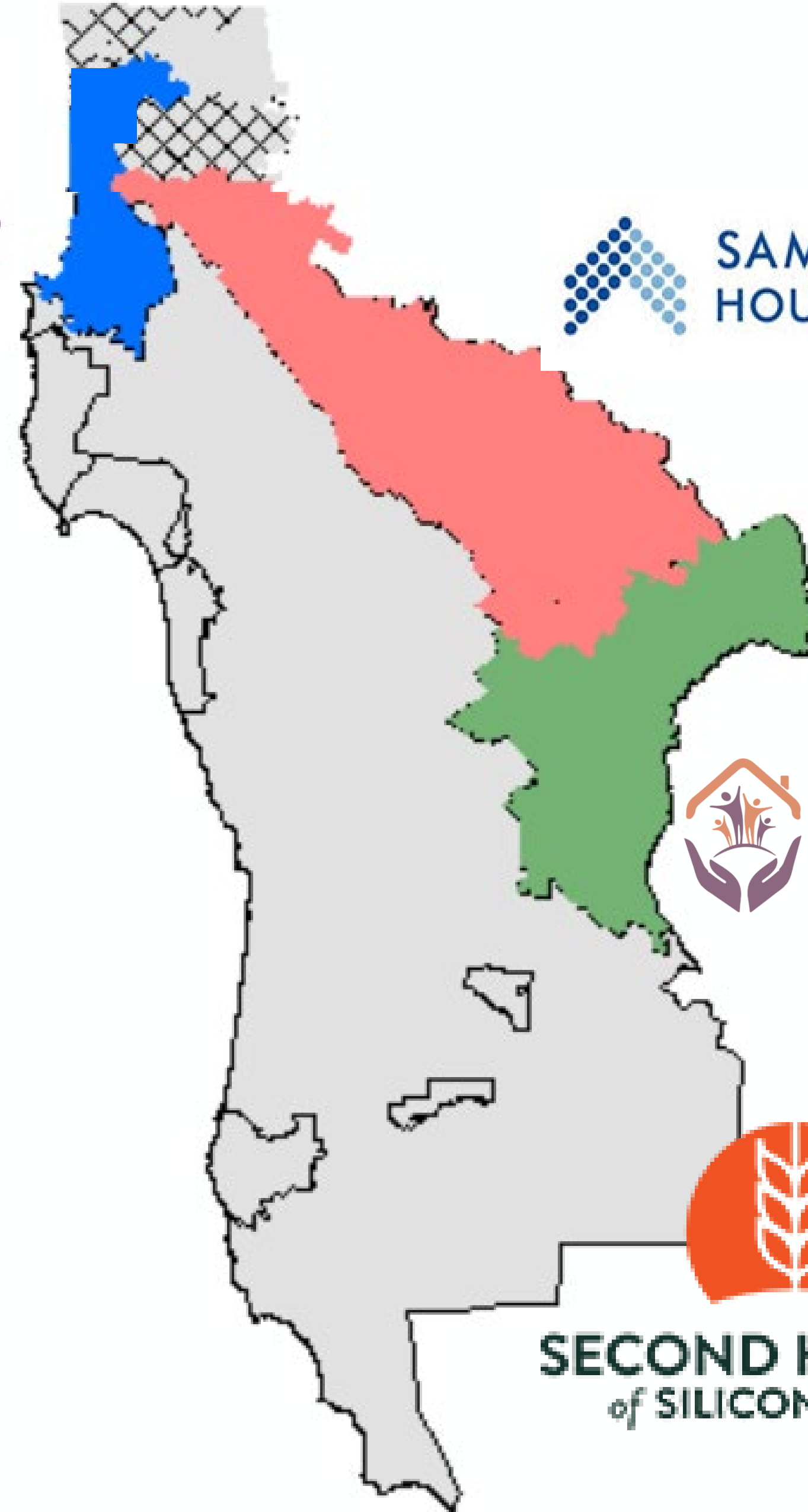


- Consistent messaging
- One set of rules for all generators, FROs, FRSs
- One entity to report to for all food recovery in San Mateo County

Regional Edible Food Recovery Capacity Building



SECOND HARVEST
of SILICON VALLEY



Regional Edible Food Recovery Capacity Building



Inspections

4/18/22, 5:08 PM D81 DONATION SOP - Google Docs

COSTCO

Meat Donation SOP

Ensure the product is in the proper condition to be donated. Only wholesome food should be donated.

Review all dates on packaging, these dates are NOT expiration dates. The food is still wholesome on/after these dates.

- "Best if Used By/Before" indicates when a product will be of best flavor or quality. It is not a purchase or safety date.
- "Sell By" date tells the store how long to display the product for sale for inventory management. It is not a safety date.
- "Use-By" date is the last date recommended for the use of the product while at peak quality. It is not a safety date except when used on infant formulas.

What we CAN Donate

- Poultry
- Lamb
- Pork (Ground Pork)
- Sausage
- Beef (Offal)
- Ground Bison
- Ground Wagyu
- Organic Ground Beef
- Fine Grind & Bull Meat Tubes / Case
- Seafood - exceptions listed below

What we can NOT Donate

- In-house Ground Beef (#83724, #69509)
- Seafood Items - Tuna, Mahi Mahi, Swordfish, Wahoo/Duo, Amberjack
- Returned Items
- Anything you would not consume yourself

RTV ONLY LINK - Food Donation Release Form Must be signed each year in January by every agency picking up food. Keep these forms on file in Red Binder #13

RTV / Warehouse Frequently Asked Questions



Q. How can I see how much my warehouse has donated?
A. You can view the Feeding America Donation Reports on JAM to see how many pounds your warehouse has donated by going to: Global Sustainability and Compliance < Operations < Donations

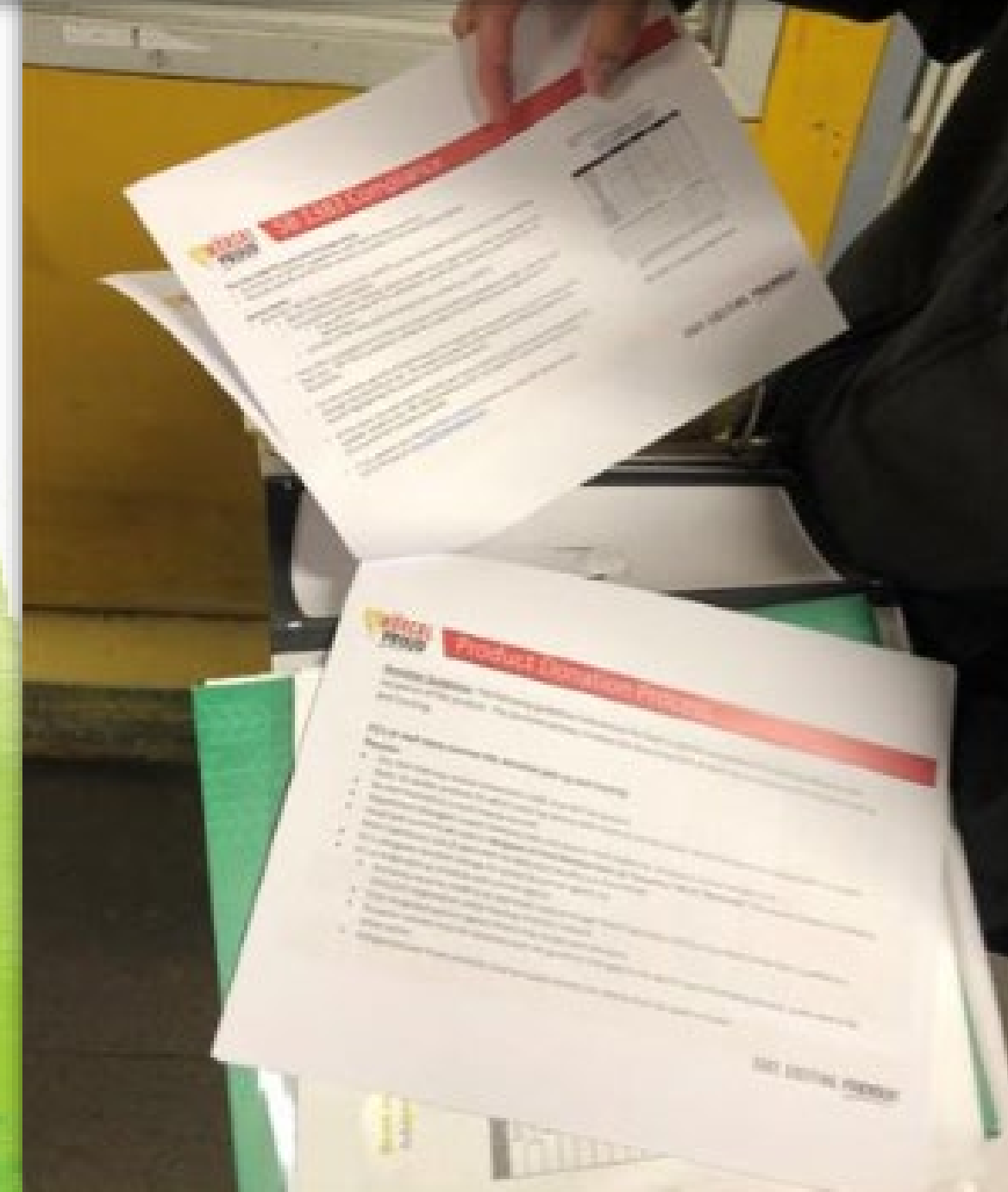
Q. Do I need to keep my donation receipt?
A. Most agencies will leave a receipt with you after each pickup, but you do not need to retain these documents.

Q. Where can we find Donation Tags?
A. These can be manually created at your location.

Q. How should I package my donations?
A. To facilitate the donation process, we ask that prior to pickup everything is palletized to make pickups as smooth and efficient as possible. Apple and banana boxes are preferred, but any food grade, non-USDA stamped box is acceptable.

Any other questions regarding food donation? Email Sarah Madonna at smadonna@costco.com

	
<p>Pull product from counter on sell by date</p>	<p>Box product by species (do not co mingle) Do not mix raw & ready to eat</p>
<p>Use RF Gun to Scan Out: WH572 Option 72 on RF Scanner</p>	<p>Place box in freezer for pick up by agency All Protein & Seafood must be Frozen</p>
<p>Food Donation - Pallet Tag</p> <p>Warehouse # _____</p> <p>Agency Picking Up Donation _____</p> <p>Date Picked Up _____</p> <p>Comments _____</p> <p>Costco Signature _____ Pick Up Agency Signature _____</p> <p>Food Donation Pallet Tag: LINK to Pallet Label</p> <p>Updated 9/14/21</p>	<p>DO NOT box different categories of food, mix different species of meat in the same box, or mix raw and ready to eat products together.</p> <p>Separate cooler and freezer products from non-cooler products and store properly until donation agency arrives and clearly label your donations and palletize if space allows</p> <p>When the agency arrives, grab the donate-able products from the freezer and cooler.</p>



Inspections



Next Steps



1. Enforcement

1. EFR Capacity Planning

1. Ramp up inspections

1. Pilot new EFR approaches



Questions?

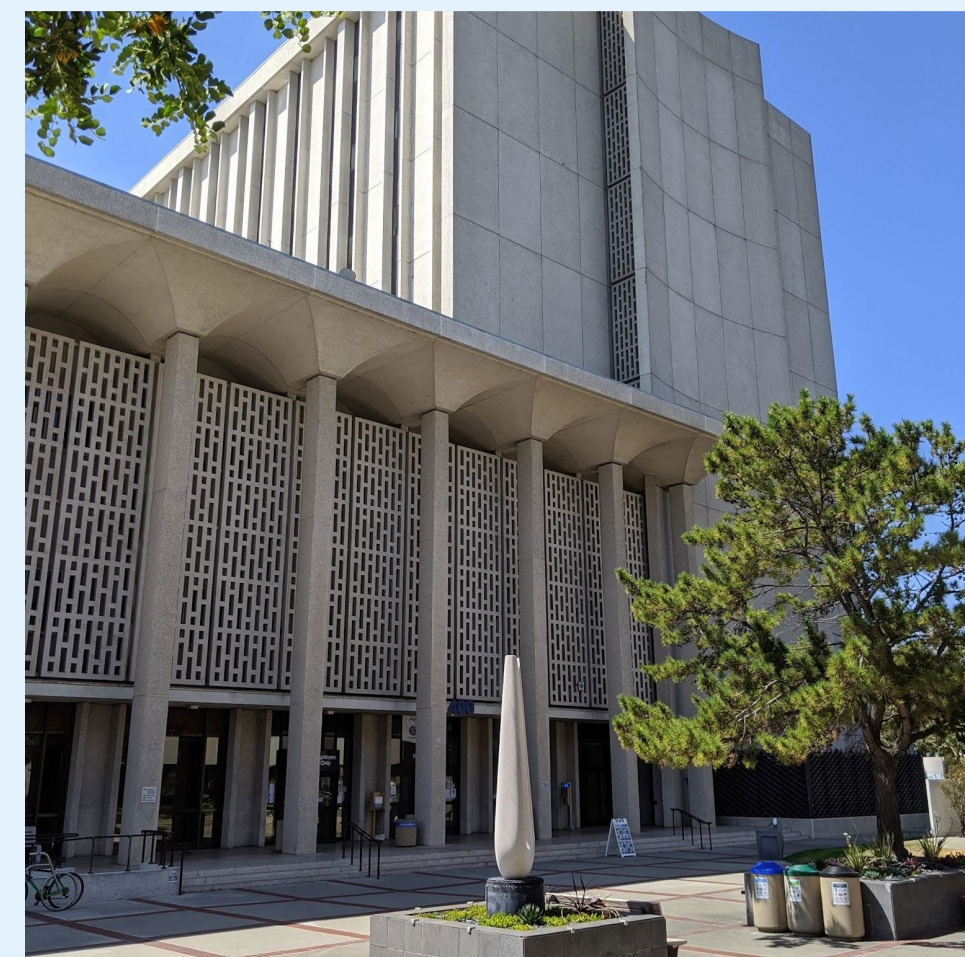
3: 2023 Energy Watch Highlights

2023 Energy Watch Highlights

GK-12 Program



Energy efficiency program for government and K-12 public schools.



School Data Project



Partnership with the San Mateo Office of Education and Peninsula Clean Energy to collect information on school facilities.



Simplified Savings



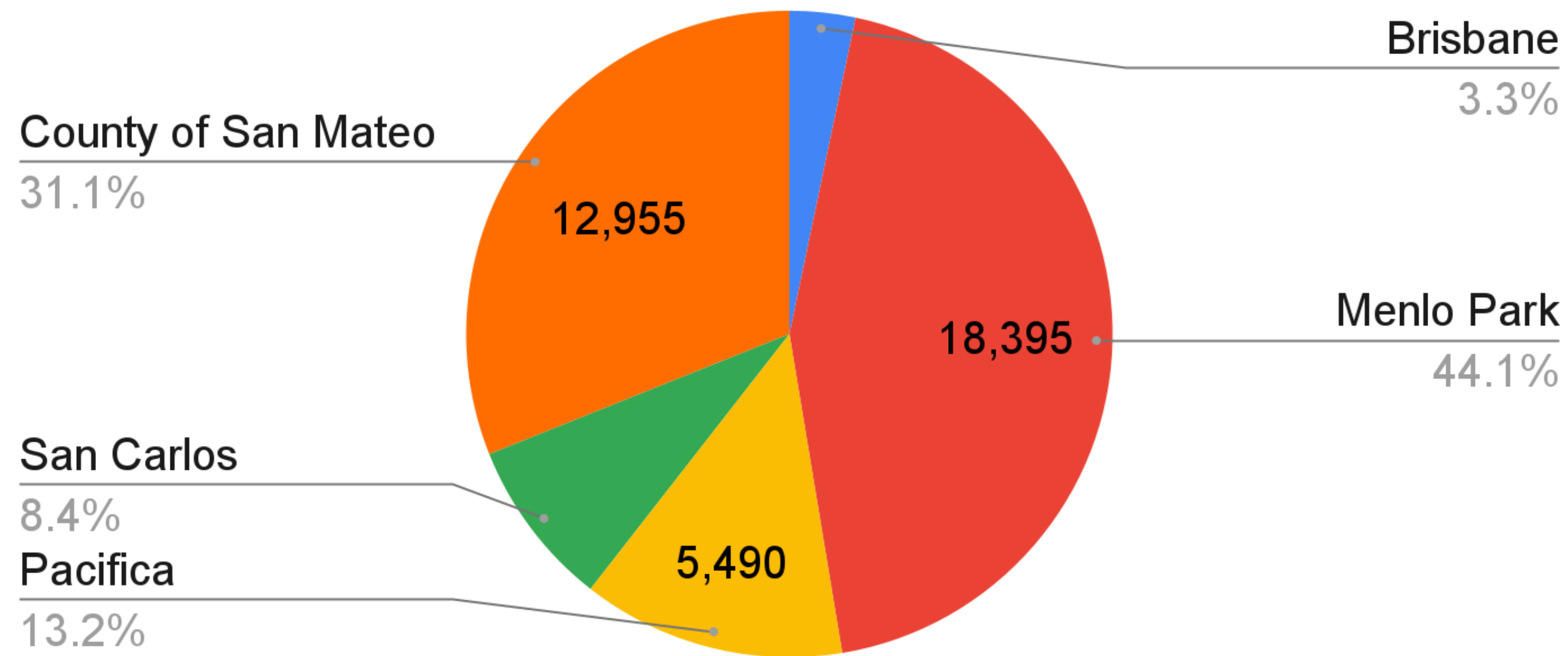
Energy efficiency program for hard to reach small businesses.



2023 Energy Watch Highlights: GK-12 Program

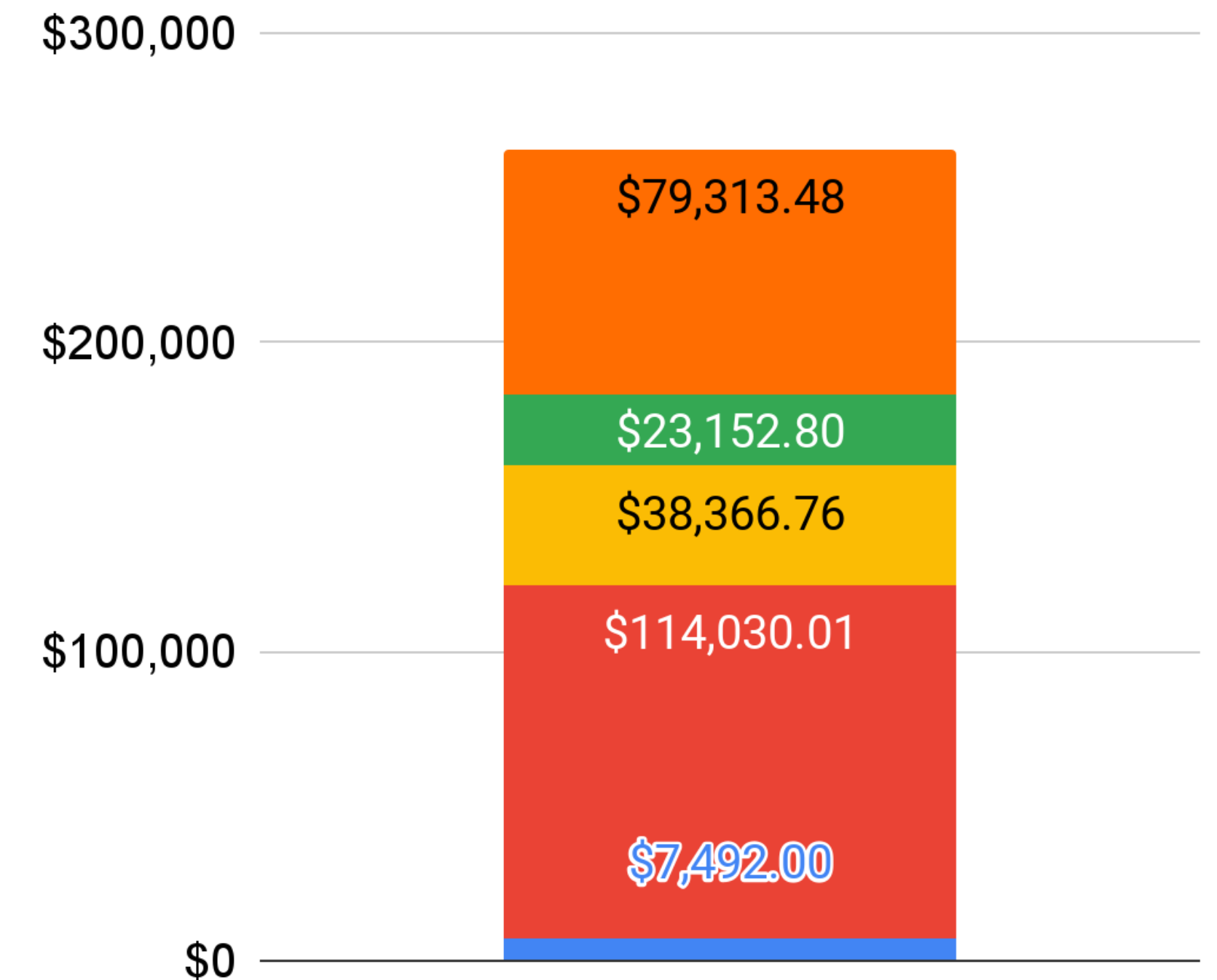
Installed Heat Pump Water Heaters (HPWHs)

Net Total Therms Savings - 41,712



Total Capped Incentive - \$262,355.05

■ County of San Mateo
 ■ San Carlos
 ■ Pacifica
■ Menlo Park
 ■ Brisbane



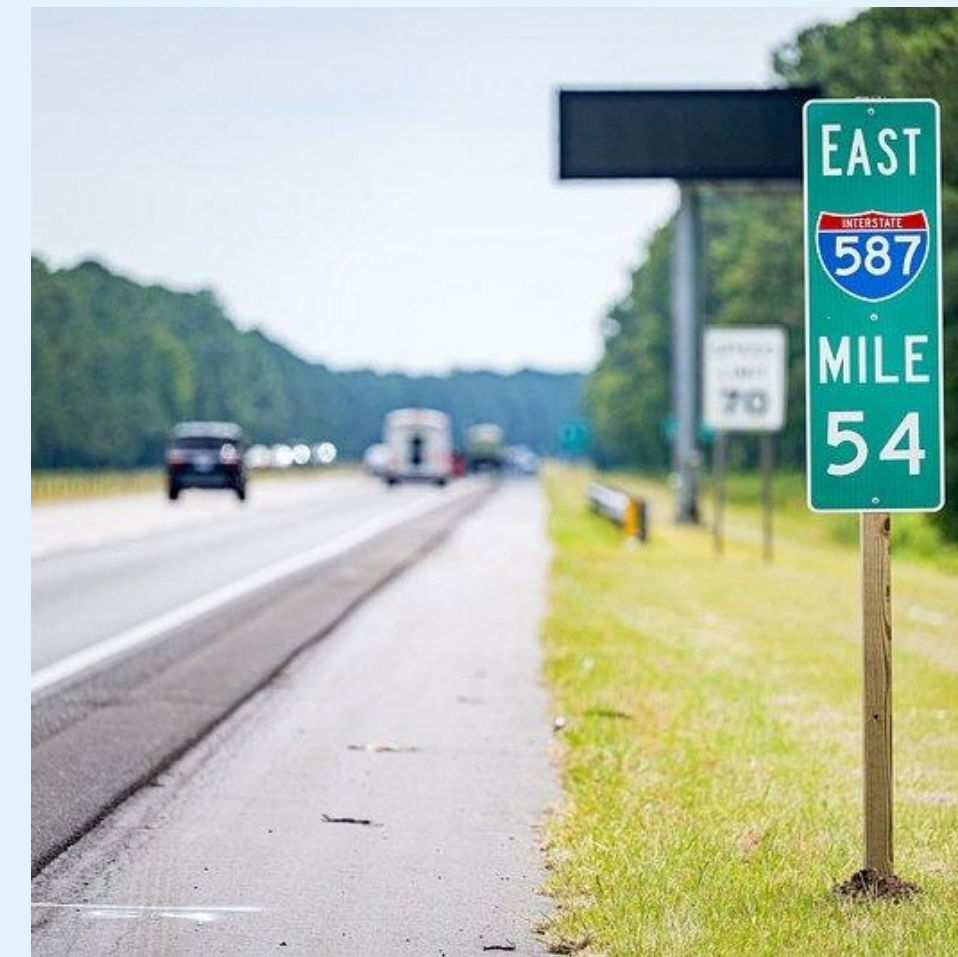
41,712 therms of methane gas is equal to...



49.1 gasoline-powered passenger vehicles driven for one year



565,771 miles driven by a gasoline-powered passenger vehicle



42.9 homes' electricity use for one year

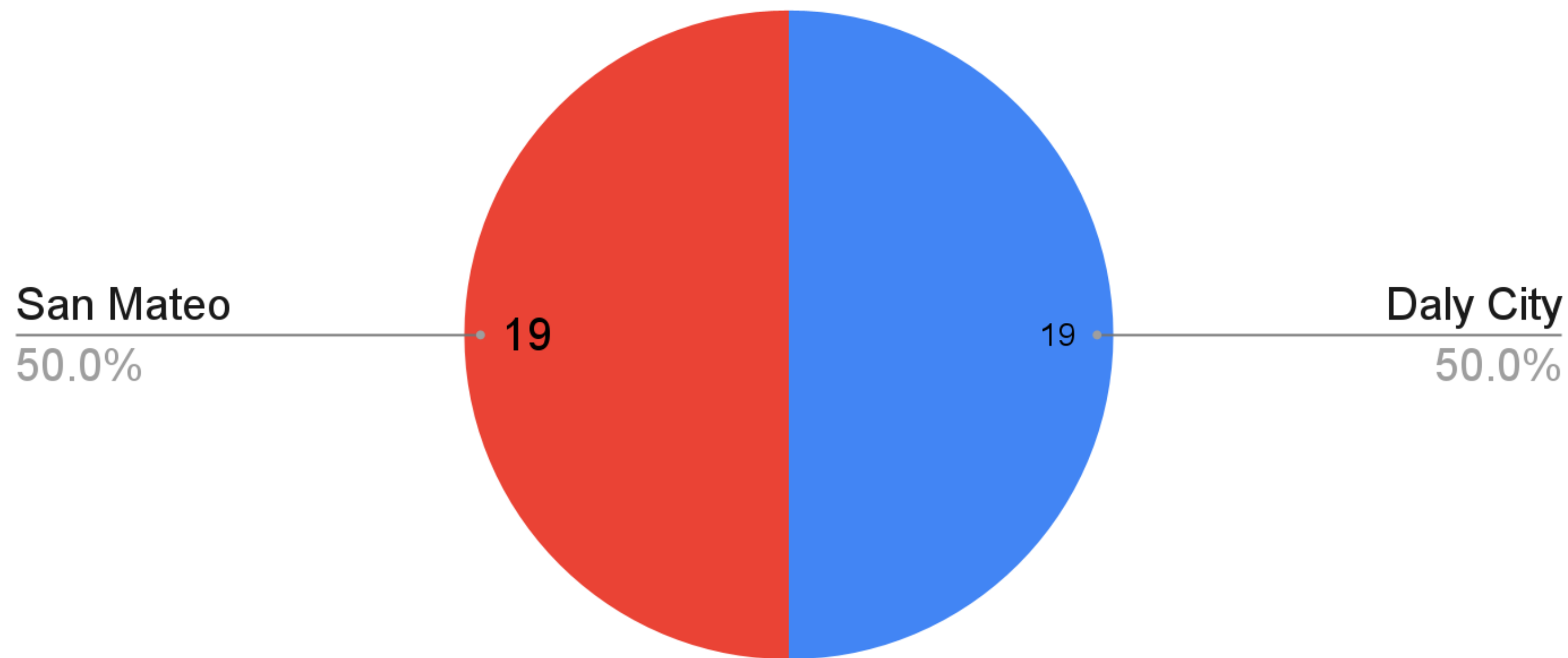


2023 Energy Watch Highlights: GK-12 Program

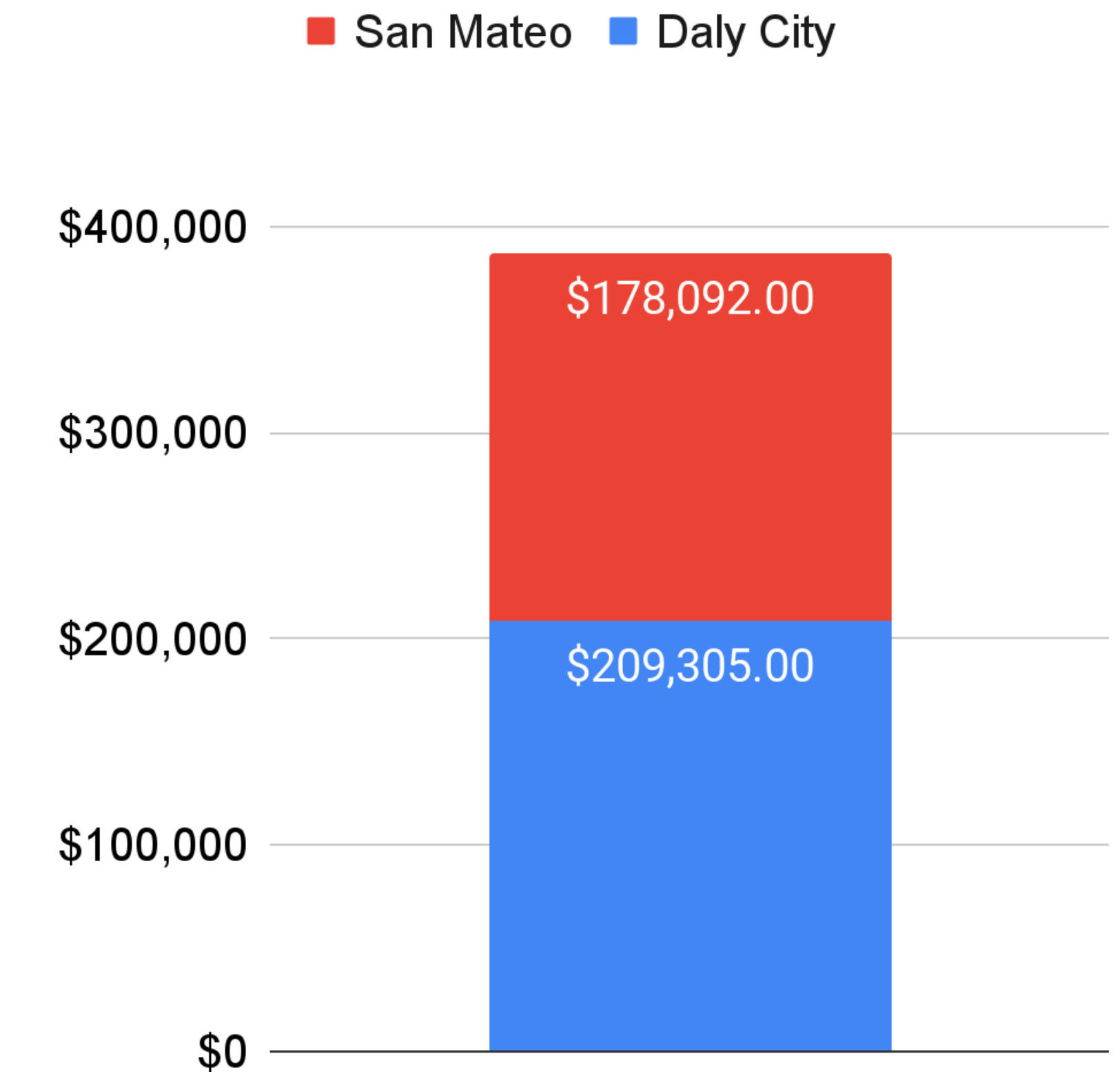


Planned & Proposed HPWHs

Number of Proposed Water Heaters - 38



Total Capped Incentive - \$387,397



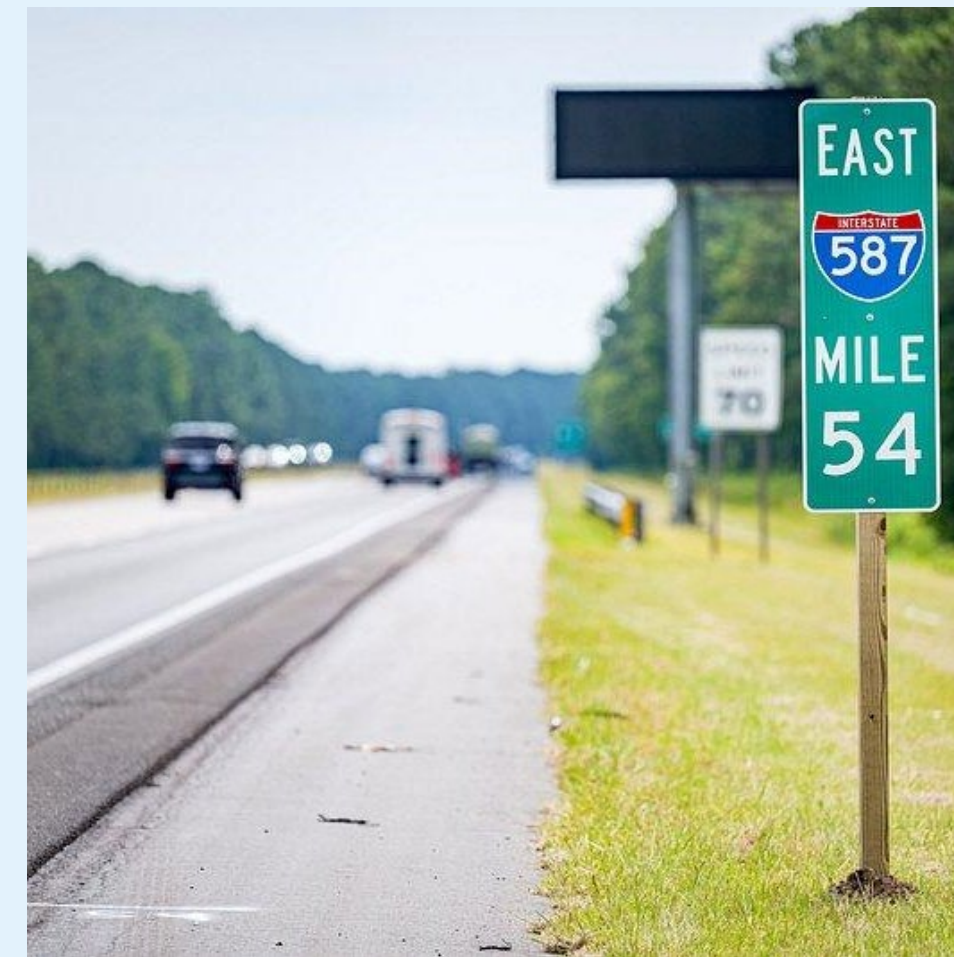
37,275 therms of methane gas, saved in Daly City is equal to...



43.9 gasoline-powered passenger vehicles driven for one year



505,588 miles driven by a gasoline-powered passenger vehicle



38.4 homes' electricity use for one year



School Data Project



- **GOAL:** Learn more about public K-12 school facilities and use the information to inform future energy efficiency opportunities
- Progress so far:
 - 34 surveys,
 - 25 site visits, &
 - 22 methane gas catalogs



Sequoia High School, photo taken by David Sawyer



School Data Project: What Have We Learned So Far?

- Air quality, water resources, waste, energy use, transportation, and availability of DERs

Energy Efficiency Opportunities:

- LED lighting
 - 15 schools have reported that less than 30% of their lights have been upgraded to LEDs



Sequoia High School, photo taken by David Sawyer



Simplified Savings Program



- New commercial program
- Hard-to-reach small businesses
 - Have a peak demand of 50 kW or less
 - Not part of a chain with more than 10 locations
 - Primary language spoken is other than English
 - Business size is less than 10 employees
 - Facility is leased or rented
- 8 referrals so far!



Odyssey's Pizzeria Taqueria, business owner's photo from Yelp



An aerial photograph of a coastal area, likely a lagoon or estuary, showing intricate patterns of white sandbars and channels cutting through deep blue water. The perspective is from a high angle, looking down at the water's surface.

3: Group discussion: 2023 Highlights & Where We're going in 2024

Part 1: Sustainability Action Highlights and Challenges (2023)



- What have been the big themes of your sustainability work in 2023
- What has been successful?
- What has been challenging?
 - 1: Solo brainstorm (5 minutes)
 - 2: Small group discussion (10 minutes)
 - 3: Large group discussion (10 minutes)



Part 2: What we're hoping to see from RICAPS in 2024



- What are the big climate action planning themes you are thinking about in 2024?
- What are some opportunities for regional collaboration?
- A year from now, what would you like to see RICAPS accomplish?

- *1: Solo brainstorm (5 minutes)*
- *2: Small group discussion (10 minutes)*
- *3: Large group discussion (10 minutes)*





OFFICE OF
SUSTAINABILITY
COUNTY OF SAN MATEO



**THANK
YOU**